

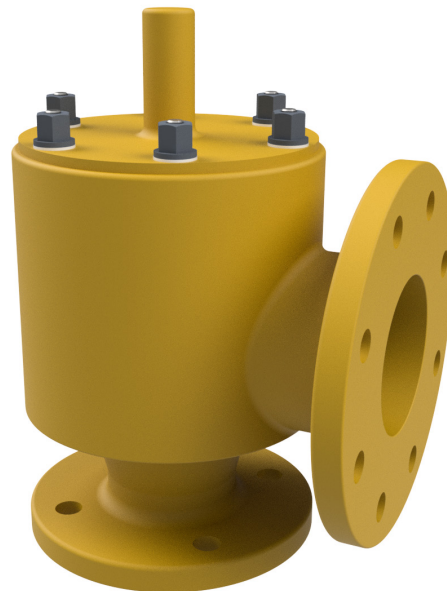
94072 FRP Pressure Only Closed Vent (Outlet > Inlet)

The Shand & Jurs model 94072 Pressure Only Closed Vent is constructed of Fiberglass Reinforced Plastic (FRP). It has been designed for superior corrosion resistance in oxidizing environments. The 94072 is ideally suited for a variety of tank storage and product conservation applications. It is applicable for the chemical, petroleum, petrochemical and waste treatment industries. This conservation vent can be utilized at the end of the line allowing vapors to escape into the atmosphere. Its method of operation allows pallets in the vent housing to open and close permitting the pressure relief necessary to remain within permissible settings thus avoiding damage to the tanks.

The weights are encapsulated lead. Available in 2" through 12" sizes with standard ANSI 125/150 lb or EN1092-1 PN10/16 flanges.

Construction options such as encapsulated weights and extra corrosion barriers allow for use in extremely corrosive environments such as 36% HCL.

The 94072 is easy to install and is completely compatible with existing pipes, vents and tank fittings. Its low initial cost and ease of maintenance make the FRP Pressure Only Closed Vent an attractive alternative to Stainless Steel, Hastelloy and Monel construction.



Features

- One piece construction prevents product leakage
- Self Draining Housing prohibits condensate from seating surface
- Simple installation & maintenance
- Vent protection from freezing, binding and clogging
- 470 Derakane standard, 411 Derakane and Furan available

Specifications:

Sizes:

2"x 3", 3"x 4", 4"x 6", 6"x 8", 8"x10", 10"x12", 12"x14"

Standard Pressure & Vacuum Setting:

1/2 oz./in.²

Flange:

To match drilling of ANSI 125/150 lb., EN1092-1
PN10/16.

Maximum Pressure Settings:

Size	Maximum Pressure
2"	8 oz/in ²
3"	10 oz/in ²
4"	10 oz/in ²
6"	12 oz/in ²
8"	12 oz/in ²
10"	10 oz/in ²
12"	10 oz/in ²

Materials of Construction:

Body:

Fiberglass and choice of vinyl ester resins 411 or 470
Derakane. Furan also available.

Weights:

FRP Encapsulated lead.

External Hardware:

316 S.S. (Hastelloy "C" Optional)

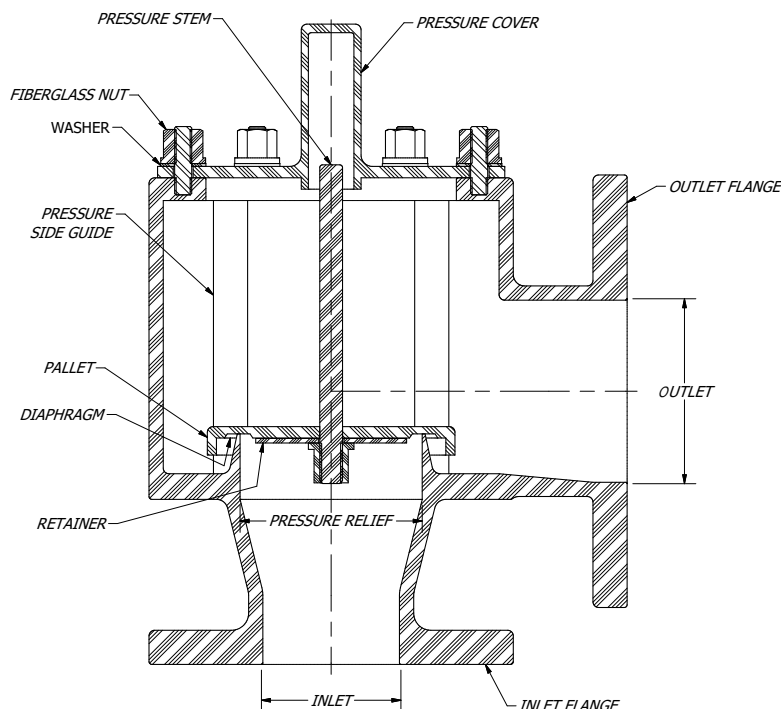
Internal Stem & Guides:

Same material as body

Diaphragm:

FEP Teflon

Pressure Only Closed Vent Assembly:



94072 Ordering Guide

Model Number Selection

The model number will consist of a base number **94072** followed by 5 digit numbers. These digits will represent 5 sets of option tables.

94072 - AB - CD - E

Ordering Information

Specify:

1. Model 94072 Fiberglass Reinforced Plastic Vent
2. Type of Size
3. Type of Pressure Setting
4. Temperature Range
5. Flange Type



Table A - Size (Inlet x Outlet)

Option A	Description
2	2" x 3"
3	3" x 4"
4	4" x 6"
6	6" x 8"
8	8" x 10"
0	10" x 12"
1	12" x 14"

Table C* - Size of Pallet Assembly

Option C	Description
2	2"
3	3"
4	4"
6	6"
8	8"
0	10"
1	12"

*Option "C" must match option "A"

Table B - Body Material & Flange Type

Option B	Body Material	Flange Type
A	Derakane 470 (316SS Studs)	ANSI-FF 150#
B	Derakane 470 (Hastelloy "C" Studs)	ANSI-FF 150#
C	Derakane 411 (Hastelloy "C" Studs)	ANSI-FF 150#
D	Furan (Hastelloy "C" Studs)	ANSI-FF 150#
E	Derakane 470 (316SS Studs)	EN1092-1 PN16 FF
F	Derakane 470 (Hastelloy "C" Studs)	EN1092-1 PN16 FF
G	Derakane 411 (Hast "C" Studs)	EN1092-1 PN16 FF
H	Furan (Hastelloy "C" Studs)	EN1092-1 PN16 FF

Table D - Setting & Weight Type

Option D	Description
A	LOW: 0.5 oz/in ² to 3.0 oz/in ²
B	MED: 3.01 oz/in ² to 8.0 oz/in ²
C	HIGH: 8.01 oz/in ² to 16 oz/in ²

Table E - Options

Option F	Description
0	None
A	Polypropylene Vacuum Screen