

## 94071 FRP Conservation Closed Vent (Outlet = Inlet)

The Shand & Jurs model 94071 Conservation Closed Vent is constructed of Fiberglass Reinforced Plastic (FRP). It has been designed for superior corrosion resistance in oxidizing environments. The 94071 is ideally suited for a variety of tank storage and product conservation applications. It is applicable for the chemical, petroleum, petrochemical and waste treatment industries. This conservation vent can be utilized at the end of the line allowing vapors to escape into the atmosphere. Its method of operation allows pallets in the vent housing to open and close permitting the vacuum or pressure relief necessary to remain within permissible settings thus avoiding damage to the tanks.

The weights are encapsulated lead. Available in 2" through 12" sizes with standard ANSI 125/150 lb or EN1092-1 PN10/16 flanges.

Construction options such as encapsulated weights and extra corrosion barriers allow for use in extremely corrosive environments such as 36% HCL.

The 94071 is easy to install and is completely compatible with existing pipes, vents and tank fittings. Its low initial cost and ease of maintenance make the FRP Conservation Closed Vent an attractive alternative to Stainless Steel, Hastelloy construction.



### Features

- One piece construction prevents product leakage
- Self Draining Housing prohibits condensate from seating surface
- Simple installation & maintenance
- Vent protection from freezing, binding and clogging
- 470 Derakane standard, 411 Derakane and Furan available

## Specifications:

### Sizes:

2"x 2", 3"x 3", 4"x 4", 6"x 6", 8"x 8", 10"x 10", 12"x 12"

### Standard Pressure & Vacuum Setting:

1/2 oz./in.<sup>2</sup>

### Flange:

To match drilling of ANSI 125/150 lb., EN1092-1 PN10/16.

### Maximum Pressure/Vacuum Settings:

Size	Max. Pressure	Max. Vacuum
2"	8 oz/in <sup>2</sup>	8 oz/in <sup>2</sup>
3"	10 oz/in <sup>2</sup>	8 oz/in <sup>2</sup>
4"	10 oz/in <sup>2</sup>	8 oz/in <sup>2</sup>
6"	12 oz/in <sup>2</sup>	8 oz/in <sup>2</sup>
8"	12 oz/in <sup>2</sup>	8 oz/in <sup>2</sup>
10"	10 oz/in <sup>2</sup>	8 oz/in <sup>2</sup>
12"	10 oz/in <sup>2</sup>	8 oz/in <sup>2</sup>

## Materials of Construction:

### Body:

Fiberglass and choice of vinyl ester resins 411 or 470 Derakane. Furan also available.

### Weights:

FRP Encapsulated lead.

### External Hardware:

316 S.S. (Hastelloy "C" Optional)

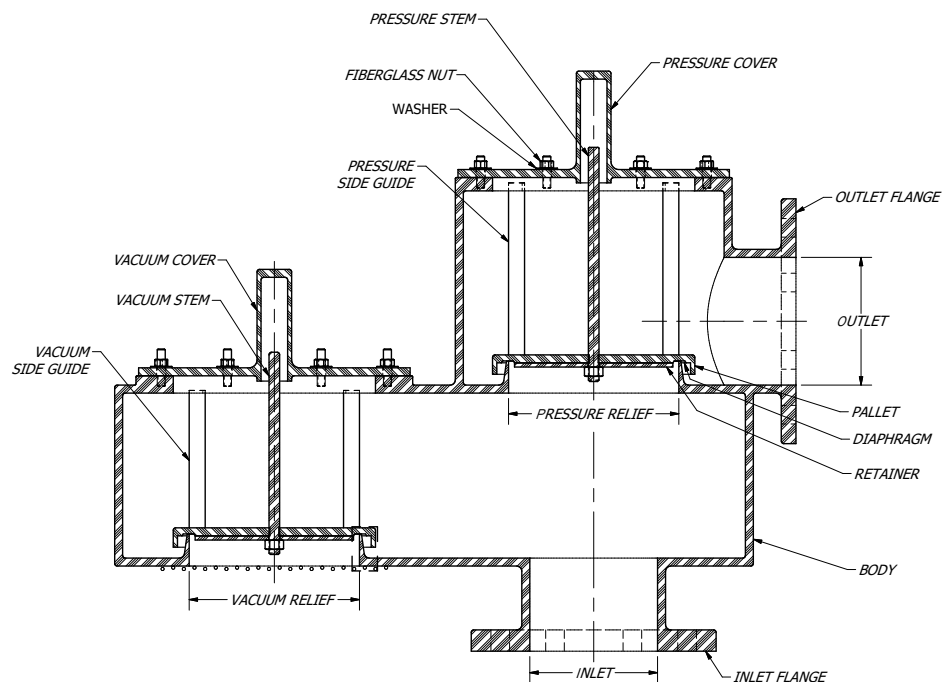
### Internal Stem & Guides:

Same material as body

### Diaphragm:

FEP Teflon

## Closed Vent Assembly:



## 94071 Ordering Guide

### Model Number Selection

The model number will consist of a base number **94071** followed by 5 digit numbers. These digits will represent 5 sets of option tables.

**94071 - AB - CD - E**

### Ordering Information

Specify:

1. Model 94071 Fiberglass Reinforced Plastic Conservation Vent
2. Type of Size
3. Type of Pressure and Vacuum Setting
4. Temperature Range
5. Flange Type



**Table A - Size (Inlet x Outlet)**

Option A	Description
2	2" x 2"
3	3" x 3"
4	4" x 4"
6	6" x 6"
8	8" x 8"
0	10" x 10"
1	12" x 12"

**Table B - Body Material & Flange Type**

Option B	Body Material	Flange Type
A	Derakane 470 (316SS Studs)	ANSI-FF 150#
B	Derakane 470 (Hastelloy "C" Studs)	ANSI-FF 150#
C	Derakane 411 (Hastelloy "C" Studs)	ANSI-FF 150#
D	Furan (Hastelloy "C" Studs)	ANSI-FF 150#
E	Derakane 470 (316SS Studs)	EN1092-1 PN16 FF
F	Derakane 470 (Hastelloy "C" Studs)	EN1092-1 PN16 FF
G	Derakane 411 (Hast "C" Studs)	EN1092-1 PN16 FF
H	Furan (Hastelloy "C" Studs)	EN1092-1 PN16 FF

**Table C\* - Size of Pallet Assembly**

Option C	Description
2	2"
3	3"
4	4"
6	6"
8	8"
0	10"
1	12"

\*Option "C" must match option "A"

**Table D - Setting & Weight Type**

Option D	Description
A	LOW: 0.5 oz/in <sup>2</sup> to 3.0 oz/in <sup>2</sup>
B	MED: 3.01 oz/in <sup>2</sup> to 8.0 oz/in <sup>2</sup>
C	HIGH: 8.01 oz/in <sup>2</sup> to 16 oz/in <sup>2</sup>

**Table E - Options**

Option F	Description
0	None
A	Polypropylene Vacuum Screen